

SonicWall NetExtender Connection Guide

Installation:

1. To access a workstation outside of ZGlobal, the user will need to use NetExtender, which is SonicWall's SSL VPN client. To download the correct NetExtender version, please click this link: <https://mysonicwall.com/muir/freedownloads>.
2. Once the user is on SonicWall's download portal, the circled listbox in the (Figure 1) below will not have NetExtender selected. The user will need to select NetExtender as the filter type to reach the displayed page.
3. The most current version of NetExtender will be at the top of the page. To start the download, click the arrow circled in (Figure 1) and trigger the download by clicking the icon circled in (Figure 2).

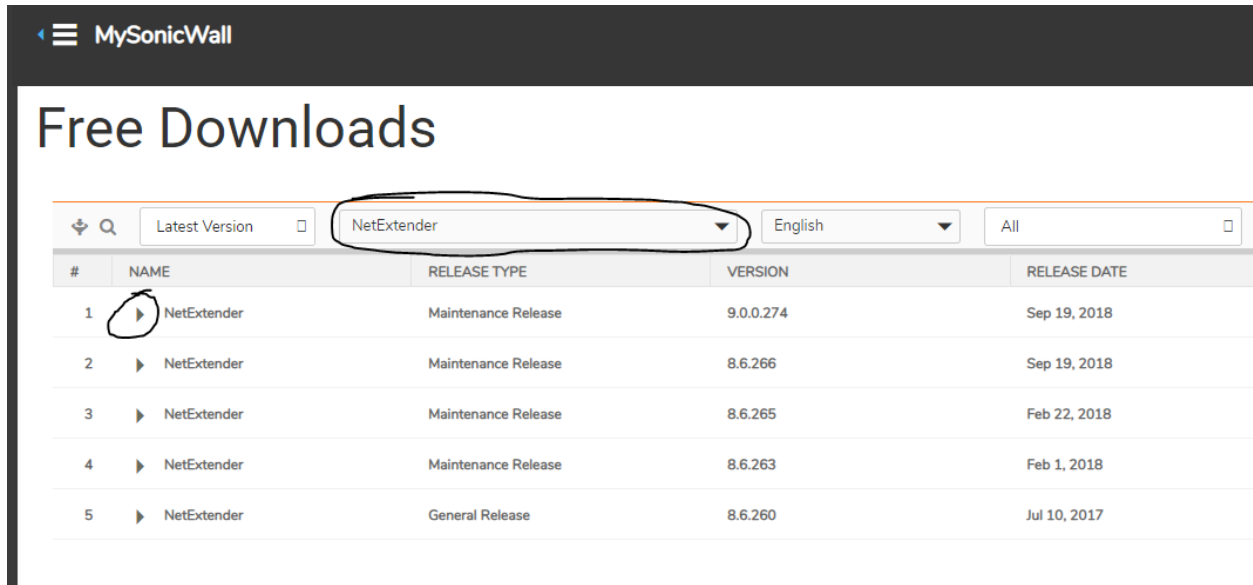


Figure 1

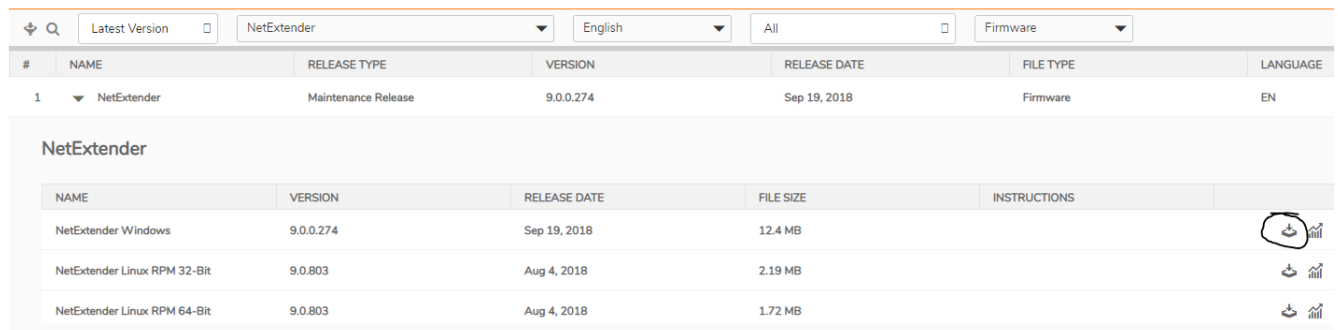


Figure 2

NetExtender Login/Connection:

1. After setup, you will need to enter the ZGLOBAL connection credentials. Please fill out the fields the same as (Figure 3) with the following information.

	Field Name	Field Value to Enter/Change
1	Server	66:208:209:85:4433
2	Username	ZGLOBAL\XXXX
3	Password	XXXXXXXXXX
4	Domain	Zglobal.local

The screenshot shows the NetExtender login interface. At the top, there is a title bar with the NetExtender logo and window controls. Below the title bar, the SonicWall logo and 'NetExtender' text are displayed. The main content area contains a login form with the following fields:

- Server: 66.208.209.85:4433
- Username: ZGLOBAL\ [redacted]
- Password: [redacted]
- Domain: Zglobal.Local

Below the form is a 'Connect' button and a checkbox labeled 'Save user name & password if server allows'. The bottom of the window features a footer with icons and the copyright notice '© 2017 SonicWall Inc.'.

Figure 3

2. The user will know the connection was successful and is able to connect to the Remote Desktop when the client status looks like (Figure 4).

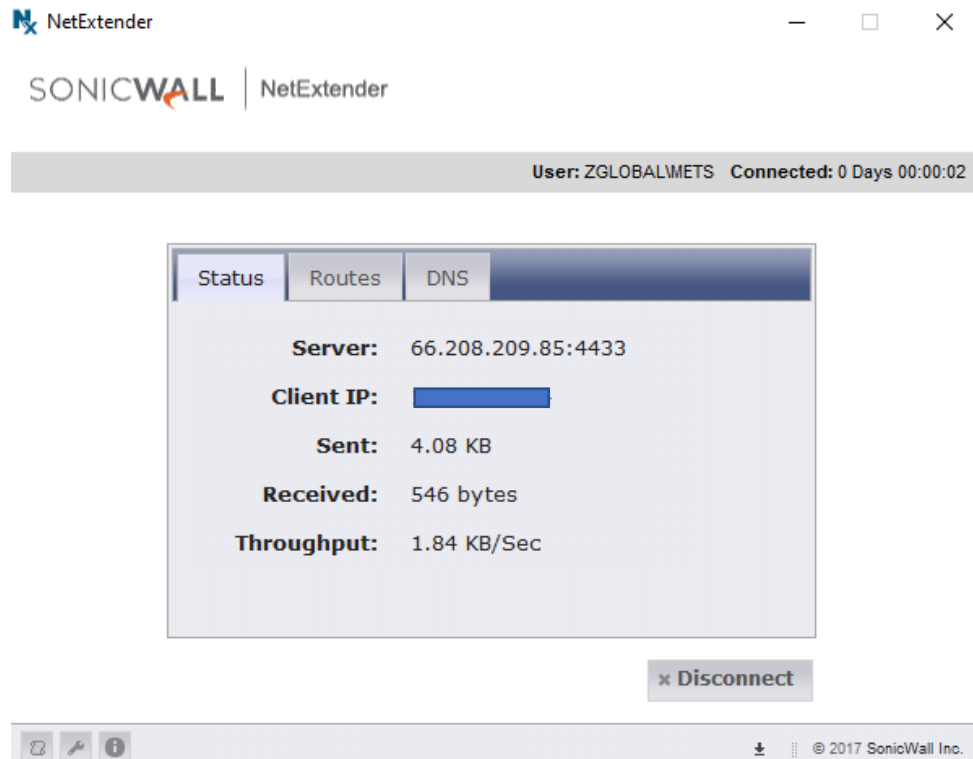


Figure 4

3. Once VPN connection is established, you will be able to access the ZGLOBAL workstation. The Remote Desktop Connection Shortcut will be sent by email by ZGlobal IT. If manual shortcut creation is needed fill out the following fields:
 - a. Computer name of the computer you are trying to connect to:
 - i. Guide to finding on all OS: <https://drexel.edu/it/help/a-z/computer-names/>
 - b. Sign in: Credentials are the same as VPN credentials